



CHAPIN
CONNECTIONS



Campbell's Corner

I am pleased to announce that going forward we will start including all divisions in our employee newsletter. We welcome the Clarence, NY facility; Heath Manufacturing in Coopersville, MI; Chapin Custom Molding (CCM) in Elyria, OH and our newest facility in Mount Vernon, KY.

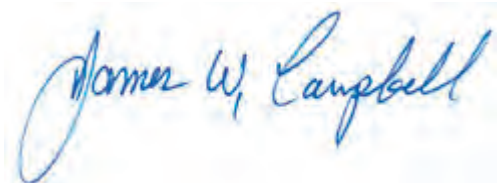
As most of you know, back in the 90's I had a previous life at Chapin. This time around I have been with Chapin for over 17 years. I find it interesting that our outside businesses that include Clarence, Coopersville, and Elyria alone are equal to the amount of sales that Chapin in Batavia had back in 2004 when I returned. I think this illustrates how important these outside businesses are to us and how vital they are in keeping Chapin Manufacturing in the top spot in the sprayer business. Each of these locations are different, but everyone has the same great work ethic!

COVID appears to be coming to an end, however, we must remain diligent. If you have not gotten your vaccination yet, stop by the Human Resources department if you need assistance making an appointment. As a reminder you get a paid day off to receive your vaccination. No cost and a free day off seems like a no brainer to me.

The Chapin fiscal year is winding down. To those not aware, the Chapin fiscal year runs from September 1 – August 31. To say the least, it has been a hectic year. At any one time across all our facilities we can be short up to 100 employees in any given day. This has caused unprecedented overtime and made on-time shipping nearly impossible.

With the newly-relaxed COVID social gathering rules, we can again start having companywide events. Each facilities' ERC (Employee Recreation Committee) should be planning an upcoming get together. Mount Vernon is planning an open house to show off the new location. In Batavia, we have the upcoming corn roast scheduled for the first week in September. If you are a part of the ERC, or would like to join and have any questions, contact Scott Fisher in the Batavia Human Resources Department. Scott will help you plan a fun and acceptable cookout for your location.

I very much look forward to a start of a new fiscal year on September 1. We can put these COVID-ridden months behind us and start anew.



James W. Campbell



13



14



17

We'd love to hear from you.

Articles and updates in *Chapin Connections* are written by employees.

Your thoughts, ideas, and observations are not only welcomed, but needed.

To submit ideas, articles, photos—or if you have questions—feel free to email wsmith@chapinmfg.com.

—Walter Smith

IN THIS ISSUE

Clarence Connections	4
Kentucky Connections	6
Michigan Connections	8
Ohio Connections	10
Lidhje Ohio [Albanian]	12
Coronavirus/COVID-19 Info	14
IT: Fiber Network Update	15
Employee Spotlight: Jill Yanus	16
Wellness Update / Graduates	17
Batavia Muckdogs / Babies	18
Product Spotlight: Water Timers	19
Milestones / New Hires	20-21
Campbell's Corner [Translated]	22-23

**SOMETHING NEW...
...SPREAD THE WORD.**



CHAPIN CLARENCE CONNECTIONS



The Chapin Clarence Division is the home of our spreader production operations. The plant was established in 2015 when the decision was made to offer spreaders in addition to sprayers, and exit the retail birding business.

Chapin has become a leader in the salt spreader business providing most of the commercial salt push spreaders in the country today. Activity at Clarence fluctuates seasonally, with Fall being the busiest production period. This leads to big swings in production capacity at the

facility that can be filled by other jobs supporting the other Chapin divisions.

Whenever possible Chapin develops and promotes from within. This often comes through not just doing a current job well but taking on additional responsibility, and taking more training or education to keep moving up.

Skyler Baker was one of the first employees hired for spreader production. Since starting he has been promoted

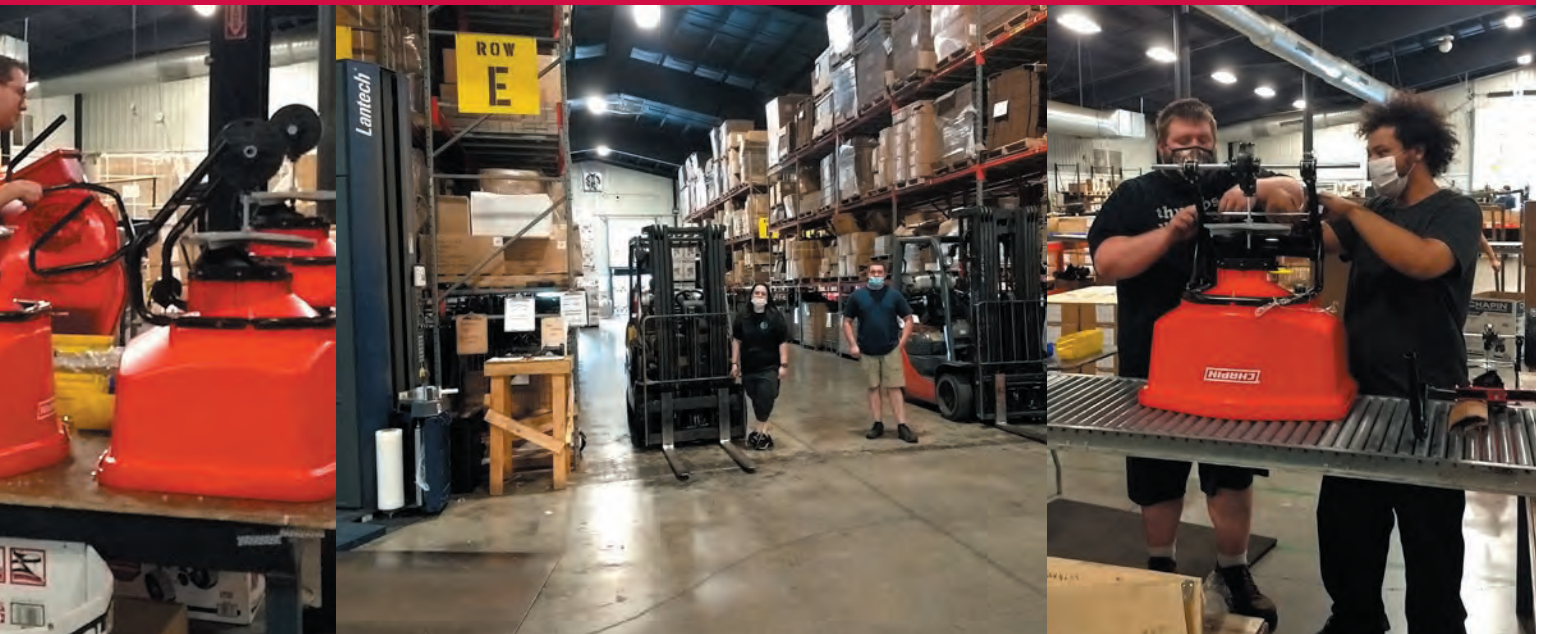
With this issue of Chapin Connections, we're introducing 4 new regular sections to the newsletter: one for each Chapin, Inc. location -- Clarence, NY; Mount Vernon, KY; Coopersville, MI (Heath); and Elyria, OH. With Chapin experiencing so much growth and expansion over the last few years, its important for all of us to understand who we are and where we are, and what's going on at each location.

Watch this space in the coming newsletters (Fall / Winter / Spring / Summer) for regular news, updates and happenings for each of our Chapin facilities.

Working together, we know we'll cover more ground.

News & Updates from our Chapin Manufacturing location in Clarence, New York

by Teresa Wozniak



several times, from assembly to line leader, quality tech and now facility supervisor. Skyler now has supervision and production planning duties since Scott Berardi was promoted from Clarence to work in Forecasting and Planning in Batavia.

Conner Baker has been promoted from Assembly to Quality, and then to Supervisor. Ryan and Amanda have been promoted to material handlers while, Grace and Dan have been promoted to Quality Techs.

As spreaders outgrew the Clarence building shipping was moved to the main plant, and you will often see one of our Chapin trucks bring parts to Clarence and spreaders back to Batavia to fill orders.

The spreader division has proven to be a good expansion of our manufacturing capabilities and selling strategy, as well as diversification of our product lines to be more resilient should one area of our business see market slowdowns.

CHAPIN KENTUCKY

CONNECTIONS



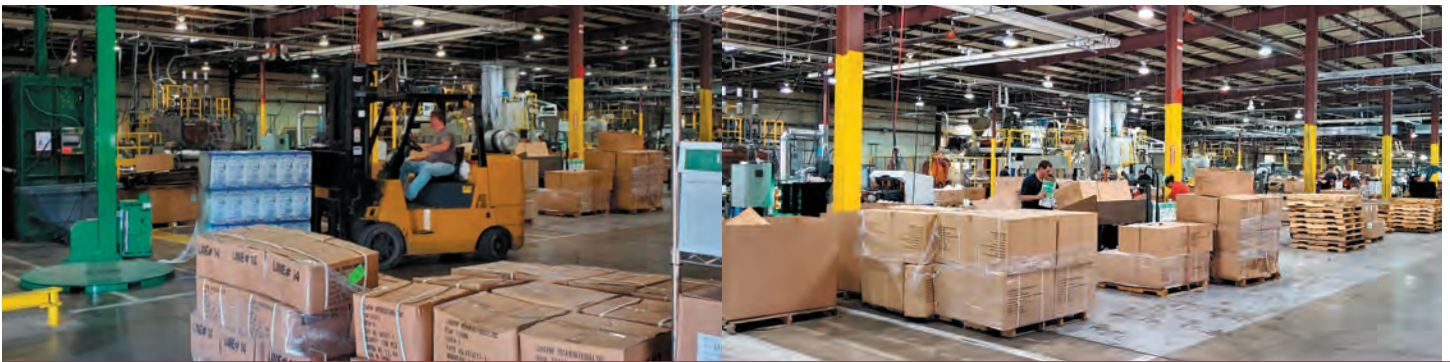
Our Kentucky facility continues to grow at an outstanding rate. While challenging at times, it has been very rewarding to watch this empty building become a full-fledged manufacturing plant.

Just a short four months ago we were able to start production on our first blow molder, running the G-Series sprayers, following that up very quickly with a second machine producing the staple of our business: the Sure Spray Series. During the heaviest customer demand we quickly ramped up production on the machines, training an entire team and running two shifts of production to help support the Batavia facility and fulfill the needs of our customers.

Shortly after that we added the hose-end sprayer line to the mix, along with the OPP sprayer line, which brought a new set of challenges. The latest additions to the plant have been production of both the OPP backpacks as well as the six-inch backpacks. All of these efforts have required staffing and training more team members across the board.

In addition to expanding production, we also have begun shipping out of Kentucky to Walmart, Menards and various other customers.

All of this would not have been possible without the continued support of our entire New York team in



News & Updates from our Chapin Manufacturing Location in Mount Vernon, Kentucky

by Doug Platt



answering the call to help ensure we have the resources, materials and supplies needed to be successful. Monica and the HR team with assisting in the on-boarding of new employees, to Purchasing and Shipping to ensure we have the supplies needed. Jeff and his tool room team in getting us the equipment needed or helping with repairs, and Chris Ace who has spent countless hours on the phone with me and our team helping in any way he can.

But most of all, thanks to the entire Kentucky team. The Maintenance team who have worked endless hours and days running through obstacles ensuring machines and lines are brought on-line quickly with very little disruption

of production, Brian German and his Quality and Shipping teams, and our strong, determined workforce who grind it out every day.

With new strong additions to our team in Tristian and Tonia our Production Supervisors, Brad Tuttle our Plant Superintendent and Marcia Platt, our Office Administrator, we look to continue to grow and expand.

Our next project will be getting the Battenfeld molder, a dual 35-pound head molder, ready for production. This unit will allow us to begin production of our ATV tanks and some other custom molding projects.



WELCOME!

Griffin Lee Davis, born April 4, 2021

Father: Blake Davis

"We keep moving forward, opening new doors, and doing new things, because we're curious and curiosity keeps leading us down new paths."

Chapin presents
one share of Disney stock
to each employee baby
upon their arrival





Despite a global pandemic, a lot has been going on in Michigan. Most of this is the growth of our product line to keep up with the demand. Core to Heath is our suet line and that's where a good percentage of our growth has come from. We recently added a high quality crafted suet cake line that provides the best natural ingredients, real fruit & nuts, and a higher concentration of ingredients. In doing so, we have had to increase our overall output of suet and added new machinery to do so; specifically a new blending system.

The new blending system gives us full control of the raw material application. It has built in capacity to run twice as fast as the current line to accommodate for growth. It is a fully automated system with touch screen controls for all of the processes. It has reporting capabilities, and can be controlled from multiple locations in the plant. This system has the capacity to add weigh check scales that would automatically adjust the fill weights as the machine runs. It also has more controlled heat zones that help to reduce down time from starts, and stops. We added infrastructure to support adding an additional production line at a later date during installation as well to help reduce capital costs for the increased capacity.

The crafted cake line has already been picked up by major retailers. The first being Tractor Supply. They picked up

the entire line almost from the launch date. They will be adding the Mango Habanero as an exclusive new product for the first year after launch. Walmart also picked up 4 of the SKU's slightly modified. They have had tremendous success with this promotional buy. The buy was more than 1 million cakes and the sell through is greater than 85% so far. Overall, this has been quite successful for Heath and its core growth.



On the horizon, we have also been working on an updated build for our Deluxe Purple Martin house. This new design will be a huge step up from our current one in terms of its materials used and ease of assembly for the consumer. We plan to have it ready and on store shelves by next year.

News & Updates from our Heath Manufacturing location in Coopersville, Michigan

by Ken Daly & Nick Mesler



CONGRATULATIONS GRADUATES!

Faith Addington,
Step-daughter of
Ken Daly,
General Manager
Forest Hills
High School



Morgan Clewley,
Granddaughter of
Brenda Clewley,
Supervisor
Tri-County
High School

Ashlyn Flanagan,
Daughter of
Terry Flanagan,
Shipping Lead
Wayland Union
High School



Lil Pratt,
Granddaughter of
Brenda Clewley,
Supervisor
Muskegon
High School

CHAPIN OHIO

CONNECTIONS



Chapin Custom Molding (CCM) joined the family of Chapin companies in July 2018 with the acquisition of Quality Blow Molding in Elyria, OH. The town of Elyria is located about 23 miles southwest of Cleveland, a more centralized location than our Batavia, NY headquarters, which makes it an excellent shipping and distribution point from which to reach customers.

CCM is an extension of our blow molding capabilities with several lines of machines making various products and parts for a wide range of customers. Operations are focused on production of blow molded components, some assembly, warehousing and shipping. Additional production lines have been put in place over the past three years to meet growing demand for blow molded parts.

The majority of CCM's business is focused on serving customers in the children's toy, lawn & garden, outdoor power equipment, and other industries. Key customers include Little Tikes, Innoplast and Husqvarna.

Chapin products are also manufactured at the facility, including 15 and 25 gallon ATV sprayer tanks, and smaller sprayer bottles including hose ends, 2-liter and 32-ounce containers. The ATV tank production will eventually move to Kentucky to make room for more business at CCM.

CCM has grown rapidly since its inception and is operating at full capacity. Three additional production lines have been added, a new silo was recently built, and a 55,000 square foot warehouse was leased recently to meet the need for additional space. Plus, distribution capabilities have been expanded with the purchase of a new truck and two 48 ft. trailers. The bright green cab and orange trailers will make Chapin stand out on the road as we ship product around the country.



Mike Wolfert and Melissa Brown

CCM is managed by Melissa Brown and Mike Wolfert who lead 24-hour operation of about 80 employees. Elyria is currently in need of about forty more employees so if you know anyone in the area looking for a job please contact HR right away!

Thanks to this dedicated team for keeping up with growing demand and meeting customer expectations with great Chapin products!

News & Updates from our Chapin Custom Molding location in Elyria, Ohio

by Teresa Wozniak



WELCOME!

Chapin presents one share of Disney stock to each employee baby upon their arrival



Scarlette Joanne Parker, born March 16, 2021

Father: Brandon Parker

Ashley Rubyann Randall, born April 26, 2021

Father: Cody Randall

Marceline Robinette Gonzalez, born May 25, 2021

Father: Marcus Rivera

Marie Maclaren, born June 16, 2021

Father: Andrew Maclaren



*"We keep moving forward,
opening new doors,
and doing new things,
because we're curious
and curiosity keeps leading us
down new paths."*



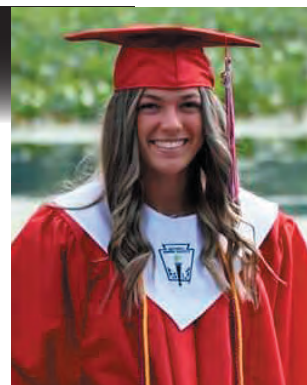
CONGRATULATIONS GRADUATES!

Courtney Hill,

Daughter of Connie Hill,
Human Resources (Elyria)
Master's Degree
Lake Erie College
Physician Assistant Program

Alexsa Hurd,

Daughter of Eric Hurd,
Director of Maintenance
(Elyria)
Field-Local High School



CHAPIN LIDHJE

OHIO



Chapin Custom Molding (CCM) u bashkua me familjen e kompanive të Chapin në Korrik 2018, me blerjen e Quality Blow Molding në Elyria, OH. Qyteti i Elyria ndodhet rreth 23 milje në jug-perëndim të Cleveland, një lokacion më i centralizuar se Batavia jonë, zyrat qendrore të NY, gjë që e bën një pikë të shkëlqyer transportimi dhe shpërndarjeje, nga ku mund të shërbehet klientela.

CCM është një zgjerim i mundësive tona për përpunimin e plastikës dhe qelqit (blow molding), me linja të ndryshme makinerish, duke bërë produkte dhe pjesë të ndryshme për një gamë të gjerë klientele. Veprimet janë përqendruar në prodhimin e pjesëve përbërëse, disa me paketimin, magazinimin dhe transportin. Linja të tjera shtesë prodhimi janë ngritur gjatë tre viteve të fundit, me qëllim për të plotësuar kërkesën në rritje për pjesë të këtij procesi prodhimi.

Pjesa më e madhe e bizneseve të CCM-së është e përqendruar në shërbimin ndaj klientelës lidhur me lodrat për fëmijë, lëndina & kopshte, pajisje me motor për mjedise të jashtme dhe industri të tjera. Klientela kryesore përfshin Little Tikes, Innoplast dhe Husqvarna.

Produktet e Chapin janë po ashtu prodhuar në strukturë, përfshirë edhe rezervuar spërkatjeje ATV prej 15 dhe 25 gallon, si edhe shishe më të vogla spërkatjeje, përfshi pjesët fundore të maruçëve dhe kontenierë prej 2 litrash dhe 32 onsësh. Prodhimi i rezervuarëve ATV do të transferohet së shpejti në Kentucky, për të mundësuar hapësirë për më shumë biznes në CCM.

CCM po rritet me shpejtësi që nga koha e fillimit të vet dhe është duke vepruar me kapacitet të plotë. Janë shtuar tre linja të reja prodhimi, së fundmi është ndërtuar edhe një kullë silosi, si edhe është marrë me qera një magazinë prej 55,000 sq ft, me qëllim për të plotësuar nevojat për hapësira shtesë. Po ashtu, kapacitetet e shpërndarjes janë shtuar me blerjen e një kamioni të ri dhe dy rimorkiove prej 48 ft. Kabina me një ngjyrë të gjelbër të ndezur dhe rimorkiot me ngjyrë portokalli do i mundësojnë Chapin të jetë mjaft e dukshme në rrugë, ndërkohë që transportojmë produktet tona në të gjithë vendin.



Mike Wolfert dhe Melissa Brown

CCM menaxhohet nga Melissa Brown dhe Mike Wolfert, të cilët drejtojnë veprime 24-orëshe për rreth 80 të punësuar/a. Elyria momentalisht ka nevojë për rreth dyzet punonjës/e më shumë, kështu që nëse njihni ndokënd në zonë që është duke kërkuar punë, lutemi të kontaktoni me HR (Burimet Njerëzore) menjëherë!

Falenderime për këtë skuadër të dedikuar për të plotësuar nevojat në rritje dhe pritshmëritë e klientelës me produkte të shkëlqyera nga Chapin!

Të Reja & Përditësime nga Lokacionet tona të Chapin Custom Molding në Elyria, Ohio

nga Teresa Wozniak



JENI TË MIRËPRITUR/A!

Chapin i paraqet një pjesë të aksioneve të Disney për çdo fëmijë të porsalindur të një punonjësi/eje, me ardhjen e tyre në jetë



Scarlette Joanne Parker, lindur më 16 Mars, 2021

Babai: Brandon Parker

Ashley Rubyann Randall, lindur më 26 Prill, 2021

Babai: Cody Randall

Marceline Robinette Gonzalez, lindur më 25 Maj, 2021

Babai: Marcus Rivera

Marie Maclaren, lindur më 16 Qershor, 2021

Babai: Andrew Maclaren



"Ne vazhdojmë të ecim përpara, të hapim dyer të reja dhe të bëjmë gjëra të reja, sepse kemi kuriozitet dhe kurioziteti vazhdon të jetë motivuesi ynë drejt shtigjeve të reja".

URIME TË DIPLOMUARËVE/AVE!



Courtney Hill,
Vajza e Connie Hill,
Burimet Njerëzore (Elyria)
Diplomë Master,
Lake Erie College,
Programi për Ndhmës Mjeko

Alexsa Hurd,
Vajza e Eric Hurd,
Drejtor i Mirëmbajtjes (Elyria)
Field-Local High School





PER NYS GUIDANCE

MASK POLICY

EFFECTIVE JUNE 16, 2021

IF VACCINATED: NO MASKS REQUIRED

**IF NOT VACCINATED: NYS STILL REQUIRES
MASKS TO BE WORN AND
SOCIAL DISTANCING TO BE OBSERVED.
YOU ARE RESPONSIBLE FOR COMPLIANCE.**

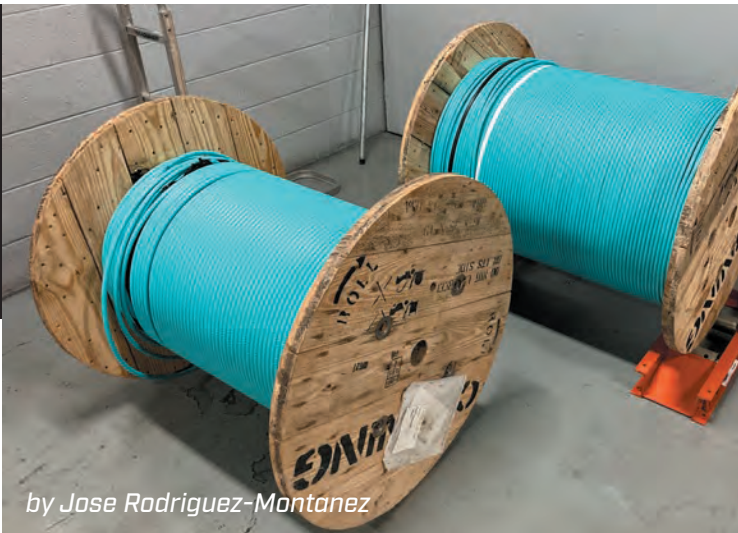
IF YOU HAVE COVID SYMPTOMS, CONTACT HR

**SAFETY REMAINS OUR NUMBER ONE PRIORITY,
SO WE EXPECT ALL EMPLOYEES TO MANAGE
THEIR COMPLIANCE APPROPRIATELY WITHIN
THE CURRENT RULES**



Rolling Out with FIBER

Chapin Invests in Fiber Optic Network Upgrade



by Jose Rodriguez-Montanez



You may have noticed teams of installers working all over the Batavia Headquarters recently, running thousands of feet of cable into every nook and cranny from the office across the factory floor. The work being done represents a big investment in upgrading our network capabilities, as well as expanding access points across the entire facility. Everyone should see the benefit of increased speed across the network, as well as better WiFi access on the floor.

Anywhere you see a white disc with a glowing blue ring (pictured to the right), that is a new network access point. The far right picture shows one on installed in the Low Bay.



JILL OF ALL TRADES



By Vince Vollo

Employee Spotlight: Jillana Yanus, *Ecommerce Specialist*



Jill Yanus is the master of the Chapin digital universe. If you ask her what she does, this is what she'll say: "I manage all content and updates to our websites: Chapin, Heath, CCM and Chapin Australia and work closely with our E-commerce Sales Manager, Customer Service and Tech Support to make sure we have the updated pricing and content. I'm constantly connected to our social media accounts: Facebook, LinkedIn and YouTube and I create, post and reply to all messages and comments. I also manage our marketing database, Syndigo. Syndigo houses all of our e-commerce content for most of the larger retailers we sell to – for Chapin and Heath. I help with Amazon and continually add updates to our Amazon storefront for both Chapin and Heath. Search keywords, Google ads, Google business pages among others are all on my list to keep track of. My daily planner is my best friend!" Jill's head is always in the details and paying close attention to moving targets is in her nature.

Another big part of Jill's job is to leverage social media platforms with creative and interesting communications

that grab attention and build awareness of our brand.

"Our posts aren't all sales related," Jill says. "I am really trying to get our products and related information in front of people. How do we differ from our competitors? Honestly, in some ways we're exactly the same so constantly posting sales and 'buy us' messages aren't always helpful. They make some followers jump ship. But, if we post information: tips, tricks, general product information, maintenance information, seasonal info, etc. it all keeps us in people's minds when they're thinking about or researching products. If someone clicks the 'shop now' or 'learn more' button on our posts, it's another step in gaining a customer."

Graphic design and marketing are two passions that Jill gets to practice daily as our Ecommerce Specialist. And to Jill, both have inspired new interests. "Working here at Chapin, I've really become interested in lawn care and birding. Best part is, I've never had a green thumb! Jokes, puns and making people laugh/think are two of the things I enjoy about social media. I have this need to educate myself about new or different things and I want to bring that into our sites and on social. People do more research online that ever before, not just to shop. I want Chapin and Heath to be the name people think about when they want to start research, not just purchase a product."

So next time you are shopping online or checking your news feed on FaceBook keep in mind that the content you consume online is all being managed by someone like Jill behind the scenes.

Fun Fact: Did you know Ecommerce traces its roots as far back as 1969? No, Al Gore did not invent the internet! Dr. John Goltz and Jeffrey Wilkins developed the CompuServe technology (using a dial-up connection) which dominated the ecommerce landscape through the mid 1990's.

Chapin Wellness Quarterly Update

Wellness has always been an important area for Chapin. We value our employees and their overall well-being is critical. Some of the fun things we have done to continue to promote Wellness are:

April: Showing Employee Pride with Chapin Gear

Sold over 300 Chapin Sweatshirts
Did weekly 50/50 events
Raised \$1533 for the Batavia Humane Society



May: Be Fit Bingo

We had 32 participants
Cindy Kegler won the BBQ Set
Toni Crouch won the Amazon Gift Card
Congratulations!

June: Financial Wellness

Financial Advisor meetings were held to educate/assist employees
Joseph Montelone met with groups and individuals to discuss 401K and other financial matters

CONGRATULATIONS GRADUATES!



Courtney George
Daughter of Tracie Rowland,
Customer Service (Batavia)
Pavilion Central High School
Attending GCC in the Fall



Ethan Lindke
Son of Troy Lindke,
Manager of Engineering (Batavia)
NCCC (Computer Science)
Starting @ UB in the fall
*He has been an IT intern at
Chapin this summer!*



Jonathan Quinn Vollo
Son of Vince Vollo,
Director of Marketing (Batavia)
Springfield College,
Bachelors in Business



CHAPIN IS PROUD TO SPONSOR THE BATAVIA MUCKDOGS

THANKS TO EVERYONE WHO HAS CLAIMED AND/OR USED OUR GAME TICKETS!

Who doesn't love minor league baseball? I took my family to see the Muckdogs play the Niagara Power on July 3rd, not only for the game, but for the fireworks show afterwards.

For the uninitiated, Dwyer Stadium is pretty small - which is cool, because you're very close to the action. The Muckdogs play in the Perfect Game Collegiate Baseball League, a 16-team league spread across NY State. Like most minor league games, between-inning festivities of bat races and other silly contests keep everyone engaged. And, of course, there is food - pretzels, hot dogs, and all the ballpark staples.

The Muckdogs won 4-0 and the fireworks started up right



after. We parked right behind the stadium and were on our way pretty quickly... overall, a very enjoyable evening at the ballpark.

Walter Smith, Marketing



WELCOME!

Chapin presents one share of Disney stock to each employee baby upon their arrival



Kaliyah Rael Johnson, born June 18, 2021

Father: Alfred Johnson

Lincoln Miller Smoak, born June 18, 2021

Father: John Smoak

Tanner Lincoln Brogan, born June 21, 2021

Parents: Kelly Bixby & Alec Brogan

"We keep moving forward, opening new doors, and doing new things, because we're curious and curiosity keeps leading us down new paths."

Timing is Everything

Water Timers Hit the Market

—By Vince Vollo

H₂O. It dominates our planet, covering 71 percent of it. Our gardens can't survive without it and too much can damage, if not kill, plants. So those of us who garden understand the time, thought and energy that goes into keeping our gardens and yards watered.

One way to save a lot of time, energy and planning is to use a water timer. Timers are an awesome way to regularly water without the worry--when you're home or away. Plus, if the conservation of water is a concern in your area, a water timer can help you regulate the amount of water you use eliminating waste and damage to plants due to over watering.

These units run in-line. They easily attach to your spigot before the garden hose. They run on AA/AAA batteries and each allows you to set the interval between waterings and the duration of watering on a daily, or even weekly basis. An example: You are planning a vacation away for a week. You are worried because there is no rain in the forecast and hot temperatures for the next week. If you have your sprinkler adjusted to cover your garden evenly, you can easily set your timer to supply water based on



47001 Analog Timer



47003 Dual Zone Digital Timer

your gardens needs. I'm in a very sandy area where the soil doesn't hold onto water very long. So I set the timer for short amounts of time with a high frequency rate. In my case I set my timer to run every 3 hours for 15 minutes each time. If you're in an area where your soil retains water well, you would water less often. The beauty of using a timer is that you can customize your timing and forget about it!



47002 Digital Timer

Chapin has introduced 3 timers on Amazon. Each has received a 4-star rating and their continued success online will drive them to be items we offer at retail as part of our Hydrofeed™ line of products.

Check them out on chapinmfg.com or on Amazon.

WELCOME TO CHAPIN



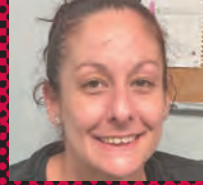
Britney Ando,
*Customer Product
Support Specialist*



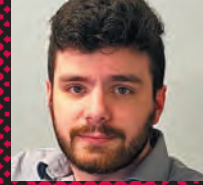
Tiffany Anzalone,
Shipping Clerk



Hayleigh Arthmann,
EDI Analyst



Ann Capuano,
Sub Assembly



Jeffrey Clauss,
Shipping Clerk



Shane Cockle,
BOM Coordinator



Kevin Cox,
Shipping



Geoffrey Cunningham,
Plastics



Richard Demmer,
Metals



Scott Deuel Jr.,
Tool Room



Don Engle, Jr.,
Tool Room



**Christopher
Lopez-Torres,**
Plastics



Jesse Lord,
Plastics



Lisa Lyons,
*Human Resources
Administrator*



Jonathan Marciniak,
Shipping Clerk



Bradley Marciszewski,
Plastics



Emelie Maysonet,
Plastics



Calvin Miller,
Tool Room



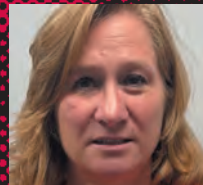
Micah Moreland,
*Customer Product
Support Specialist*



Peyton Penders,
Plastics



Antwain Richardson,
Plastics



Tracie Rowland,
Receptionist



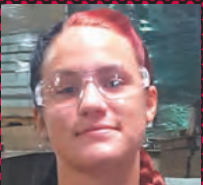
Patrick Rumble,
Sub Assembly



Katelyn Schroeder,
*Customer Product
Support Specialist*



Scott Schum,
Buyer/Planner



Bryana Soback,
Plastics



Andreana Supple,
Customer Service



LaRae Taylor,
Benefits Coordinator



Mariah Woodrich,
Receptionist



Gregory Yoder,
*Screen Print
Coordinator*

MILESTONES

RETIREMENTS JUBILACIONES:

Doug Smith worked for Chapin for 1 year as our EHS and Facilities Manager. He did a great job helping us through the COVID pandemic and during a time of transition. Tool room members hosted a cook out to celebrate Doug's retirement. Thanks, Doug for all your hard work and effort!

Deb Siuta, she has been with Chapin for 38 years. She worked in Sales and has been quite the asset to the company. She will be sorely missed. Several of her closest Sales Team counterparts took her out for a celebratory lunch (pictured at right). Thank you, Deb, for your years of service, dedication and knowledge!



ANNIVERSARIES ANIVERSARIOS:

5 years/años: Kevin Baker • Tom Forrest

15 years /años: Steve Hickey

REFERRAL BONUSES BONOS POR RECOMENDACIÓN:



Bryana Soback was referred by Miranda Morrill

Jesse Lord was referred by Jessica Greck



Christopher Lopez-Torres was referred by Jose Rodriguez



Emelie Maysonet was referred by Jose Rodriguez

Kevin Cox was referred by Brian Dorman





Esquina de Campbell

Me complace anunciar que de ahora en adelante empezaremos a incluir a todas nuestras divisiones en nuestro boletín informativo para empleados. Damos la bienvenida a la planta de Clarence, NY; a Heath Manufacturing en Coopersville, MI; a Chapin Custom Molding (CCM) en Elyria, OH y a nuestra planta más nueva en Mount Vernon, KY.

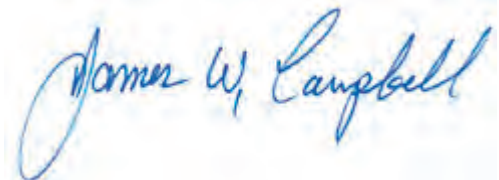
Como la mayoría de ustedes saben, en la década de 1990 tuve una vida anterior en Chapin. En esta ocasión llevo más de 17 años en Chapin. Me parece interesante que nuestros negocios externos que incluyen a Clarence, Coopersville y Elyria, por sí solos, tienen la misma cantidad de ventas que tenía Chapin en Batavia en 2004, cuando regresé. Creo que eso ilustra lo importantes que son esos negocios externos para nosotros, y su importancia vital para mantener a Chapin Manufacturing en el primer lugar del negocio de los aspersores. Cada una de estas plantas es diferente, pero todas tienen la misma ética de trabajo excelente!

El COVID parece acercarse a su fin, pero debemos seguir siendo diligentes. Si aún no te aplicas la vacuna, acude al departamento de Recursos Humanos si necesitas ayuda para hacer una cita. Les recuerdo que tendrán un día libre con sueldo para aplicarse la vacuna. Sin costo y con un día libre, me parece que es una decisión fácil.

El año fiscal de Chapin está terminando. Para quienes no lo saben, el año fiscal de Chapin es del 1 de septiembre al 31 de agosto. Por decir lo menos, ha sido un año agitado. En cualquier momento, en todas nuestras plantas, puede haber 100 empleados ausentes en un día determinado. Eso nos ha generado una cantidad sin precedentes de tiempo extra y ha hecho que sea casi imposible hacer los envíos a tiempo.

Con las reglas sobre las reuniones sociales y el COVID, que se relajaron recientemente, de nuevo podemos organizar eventos para toda la compañía. En cada planta, el ERC (Comité de Recreación de Empleados) debe estar planeando una reunión próxima. En Mount Vernon están planeando un día de puertas abiertas para presumir las nuevas instalaciones. En Batavia tenemos programado el día de maíz asado para la primera semana de septiembre. Si formas parte del ERC, o si deseas integrarte y tienes preguntas, comunícate con Scott Fisher en el Departamento de Recursos Humanos de Batavia. Scott te ayudará a planear una celebración divertida y aceptable para tu planta.

Realmente espero el inicio de un nuevo año fiscal el 1 de septiembre. Podemos dejar atrás estos meses pagados de COVID y empezar de nuevo.



James W. Campbell



Cepi i Campbell-it

Kam kënaqësinë t'ju njoftoj se që tani do të fillojmë të përfshijmë të gjithë sektorët në buletin tonë të punonjësve/eve. Ne mirëpresim Clarence, strukturat e NY; Heath Manufacturing (Përpunimin e Shqopës) në Coopersville, MI; Chapin Custom Molding (CCM) në Elyria, OH, si edhe strukturën tonë më të re në Mount Vernon, KY.

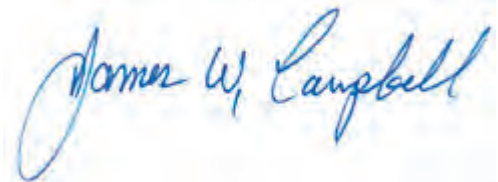
Siç shumë prej jush mund ta dijë, në vitet 90-të kam kaluar një pjesë të jetës sime në Chapin. Jam me Chapin për më shumë se 17 vite. Është mjaft interesant fakti që vetëm bizneset tona të jashtme, që përfshijnë Clarence, Coopersville dhe Elyria, kanë arritur shitje në nivele të njëjta me sasinë që Chapin në Batavia arriti në vitin 2004, kur unë u ktheva. Mendoj se kjo tregon se sa të rëndësishëm janë për ne këto biznese të jashtëm dhe sa jetikë janë ata për të mbajtur Chapin Manufacturing në suksesin më të lartë të biznesit të spërkatësve. Secili nga këto lokacione është i ndryshëm, por secili prej tyre ka të njëjtën etikë pune!

Situatës së COVID-it duket se po i vjen fundi, megjithatë, duhet të vazhdojmë të jemi vigjilentë. Nëse ende nuk e keni bërë vaksinën, kaloni nga departamenti i Burimeve Njerëzore, nëse keni nevojë për ndihmë për të lënë një takim. Mbani ndër mend se do merrni një ditë pushimi të paguar për të bërë vaksinën. Asnjë kosto dhe një ditë pushimi e bën shumë të lehtë marrjen e këtij vendimi.

Viti fiskal në Chapin po shkon drejt përfundimit. Për ata/ato që nuk e dinë, viti fiskal Chapin zgjat nga 1 Shtatori deri më 31 Gusht. Për të thënë më të paktën, ky ka qenë një vit plot tension. Në çdo moment, në të gjitha strukturat tona, mund të kemi mungesë për deri 100 punonjës/e. Kjo është shoqëruar me një punë jashtë orari të paprecedentë dhe ka bërë transportimin në kohë pothuajse të pamundur.

Me rregullat e reja të zbutura për grumbullim social, si rrjedhojë e COVID, mund të rifillojmë të organizojmë takime në gjithë kompaninë. ERC-të (Employee Recreation Committee - Komiteti për Argëtimin e Punonjësve/eve) e të gjitha strukturave duhet të jenë duke planifikuar një festë për rinisjen e punës së bashku. Mount Vernon është duke planifikuar një eveniment për të bërë publik lokacionin e ri. Në Batavia, kemi të planifikuar festën e verës së pjekjes së misrit, në javën e parë të Shtatorit. Nëse jeni pjesë e ERC-së ose dëshironi të na bashkoheni dhe keni ndonjë pyetje, lidhuni me Scott Fisher në Departamentin e Burimeve Njerëzore të Batavia. Scott do ju ndihmojë të planifikoni një festë argëtuese dhe të pranueshme për zonën tuaj.

Pres me padurim fillimin e një viti të ri fiskal më 1 Shtator. Mund të lemë pas këta muaj të COVID-it dhe të nisim edhe njëherë diçka të re.





CHAPIN

©2021 Chapin International, Inc. | For internal use only. Do not distribute.